

HYSTO-TWO Automatic Biopsy Instrument

Automatic Reusable Biopsy Gun that can be used with MDS Biopsy Needle

- The HYSTO-TWO provide high quality histological core samples
- Single-Handed loading mechanism.
- The trigger is easily actuated from the Front or Rear of the Instrument
- The specimen may be retrieved without removing the needle from the gun.

HYSTO-TWO (Box of 1)

| ORDER NO. | DESCRIPTION |
|-----------|--------------------------------------|
| 10003 | Automatic Reusable Biopsy Instrument |



MDS Biopsy Needle

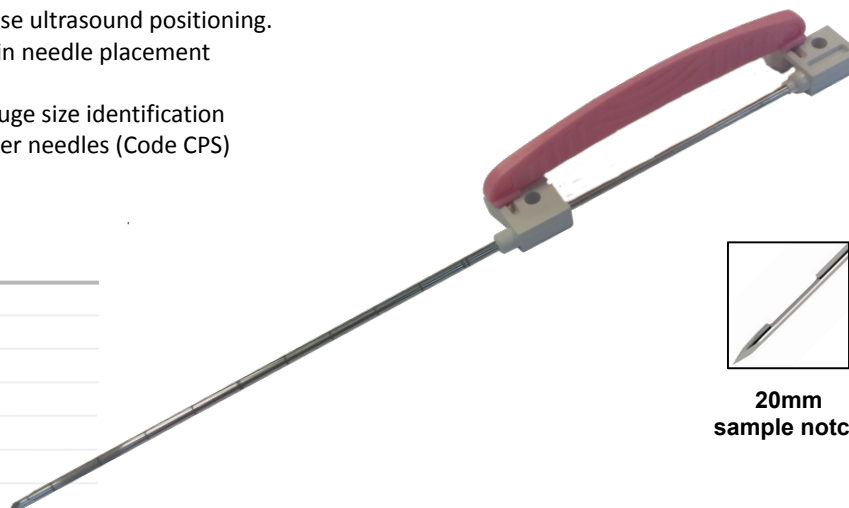
Disposable Biopsy Needle compatible with the following reusable guns:

ADRIA/HYSTO-TWO™
Angiotech/Pro-mag ULTRA

- Echogenic markings facilitate precise ultrasound positioning.
- Centimeter depth markings assist in needle placement
- Specimen notch 20mm
- Spacer are color coded for easy gauge size identification
- Can be used with co-axial introducer needles (Code CPS)

MDS Biopsy Needle Biopsy (Box of 10)

| ORDER NO. | DESCRIPTION |
|-----------|-------------|
| MDS 1410 | 14G x 10cm |
| MDS 1416 | 14G x 16cm |
| MDS 1420 | 14G x 20cm |
| MDS 1610 | 16G x 10cm |
| MDS 1616 | 16G x 16cm |
| MDS 1620 | 16G x 20cm |
| MDS 1810 | 18G x 10cm |
| MDS 1816 | 18G x 16cm |
| MDS 1820 | 18G x 20cm |
| MDS 1825 | 18G x 25cm |
| MDS 2010 | 20G x 10cm |
| MDS 2016 | 20G x 16cm |
| MDS 2020 | 20G x 20cm |



20mm
sample notch

Co-axial needle to MDS Biopsy Needle (Box of 10)

| ORDER NO. | DESCRIPTION |
|-----------|------------------------------------|
| CPS 1410 | 13G x 3.5cm, co-axial to MDS 1410 |
| CPS 1416 | 13G x 9.5cm, co-axial to MDS 1416 |
| CPS 1420 | 13G x 13.5cm, co-axial to MDS 1420 |
| CPS 1610 | 15G x 3.5cm, co-axial to MDS 1610 |
| CPS 1616 | 15G x 9.5 cm, co-axial to MDS 1616 |
| CPS 1620 | 15G x 13.5cm, co-axial to MDS 1620 |
| CPS 1810 | 17G x 3.5cm, co-axial to MDS 1810 |
| CPS 1816 | 17G x 9.5cm, co-axial to MDS 1816 |
| CPS 1820 | 17G x 13.5cm, co-axial to MDS 1820 |
| CPS 2010 | 19G x 3.5cm, co-axial to MDS 2010 |
| CPS 2016 | 19G x 9.5cm, co-axial to MDS 2016 |
| CPS 2020 | 19G x 13.5cm, co-axial to MDS 2020 |



Trocar stylet

Adria srl
Via Modena, 46
40017 San Giovanni in
Persiceto (BO)
Italy

Distributed by
GTA (UK) Ltd
34 Nottingham South Ind. Estate
Ruddington Lane
Wilford
Nottingham, NG11 7EP
Tel: 0115 981 5703
Email: mail@gtamedical.co.uk
Web: www.gta-uk.co.uk